



*Vogt Valves*

## ***Vogt Valves***

*The Connection Bulletin for  
Forged Steel: ASTM A350, Grade LF2*

*CB 09*

## Forged Steel: ASTM A350, GRADE LF2 Gate Valves

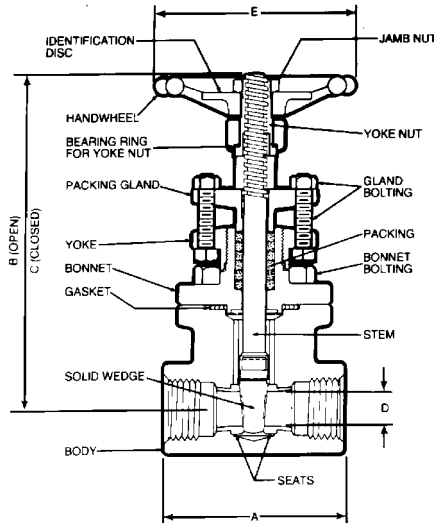


### ASTM A350, GRADE LF2 CLASS 150, 300, 600, 800 & 1500 GATE, GLOBE & CHECK VALVES

For applications where: **TEMPERATURES TO  
-50°F ARE THE RULE NOT THE EXCEPTION!**

- TRACEABLE PARTS FROM STOCK
- MACHINED PARTS HEAT TREATED TO ASTM A350, GRADE LF2
- CHARPY IMPACT TESTED
- VERIFIED STRENGTH AND TOUGHNESS
- FLEXIBLE GRAPHITE PACKING
- FLEXIBLE GRAPHITE FILLED GASKET
- MEETS API 602 DIMENSIONS
- SOCKET WELD, THREADED & FLANGED ENDS AVAILABLE

# Forged Steel: ASTM A350, GRADE LF2 Gate Valves



## ASTM A350, GRADE LF2 CLASS 800 & 1500 GATE VALVES

Vogt LF2 valves meet all requirements of ASTM A350, Grade LF2 for environmental conditions where temperatures frequently remain at or near -50°F.

In addition, valves equipped with (MB8) 316 solution annealed trim (Rc 22 max hardness) and MB6 (Soft 13CR) can be used in low temperature NACE applications requiring materials in accordance with NACE standard MR-01-75.

Our LF2 valves are manufactured under a materials control system including heat treatment procedures that assure the certified integrity of the product.

Other popular Vogt gate, globe and check valves are available with ASTM A350, Grade LF2 body and bonnet including many **special design requirements** for environmental conditions to -50°F and trim materials meeting NACE Standard MR-01-75.

See the Vogt Valve catalog, VV200, for current listing or call your Edward Vogt representative.

Order by size and number

CLASS 800 Conventional Port Sizes: 1/2 - 2				1975 psi @ 100°F
Series Number		Material		
Threaded	Socket Weld	Body/Bonnet	Trim	
32111	SW 32111	A350, GR. LF2	13% CR*	
32111MB8	SW 32111MB8	A350, GR. LF2	316 <sup>†</sup>	
CLASS 1500 Conventional Port Sizes: 1/2 - 2				3705 psi @ 100°F
Series Number		Material		
Threaded	Socket Weld	Body/Bonnet	Trim	
35111	SW 35111	A350, GR. LF2	13% CR*	
35111MB8	SW 35111MB8	A350, GR. LF2	316 <sup>†</sup>	

\* Seats are hard faced

<sup>†</sup> Type 316 seats and wedges are hard faced and solution annealed to Rc 22 max per NACE std. MR-01-75.

## PRESSURE-TEMPERATURE RATINGS

Service Temperature (°F)	CLASS 800	CLASS 1500
	ASTM A350, GR. LF2 (1) (2) PSI	ASTM A350, GR. LF2 (1) (2) PSI
-50 to 100	1975	3705
200	1800	3375
300	1750	3280
400	1690	3170
500	1595	2995
600	1460	2735
700	1420	2665
800	1100	2060

(1) Ratings are in accordance with ASME B16.34-96.

(2) Permissible but not recommended for prolonged use above 800°F.

For information only.  
Refer to Technical Specifications.  
Refer to VV200 Catalog.



**Vogt Valves**

1511 Jefferson Street  
Sulphur Springs, TX 75482

**US Sales Offices**

Phone: 903-885-3151  
Fax: 903-439-3386

**Toll-Free Telephone Service**

1-800-225-6989

**Visit Our Website**

[www.flowserve.com](http://www.flowserve.com)

**After Hours Customer Service**

1-800-543-3927

Flowserve Corporation has established industry leadership in the design and manufacture of its products. When properly selected, this Flowserve product is designed to perform its intended function safely during its useful life. However, the purchaser or user of Flowserve products should be aware that Flowserve products might be used in numerous applications under a wide variety of industrial service conditions. Although Flowserve can (and often does) provide general guidelines, it cannot provide specific data and warnings for all possible applications. The purchaser/user must therefore assume the ultimate responsibility for the proper sizing and selection, installation, operation, and maintenance of Flowserve products. The purchaser/user should read and understand the Installation Operation Maintenance (IOM) instructions included with the product, and train its employees and contractors in the safe use of Flowserve products in connection with the specific application.

While the information and specifications contained in this literature are believed to be accurate, they are supplied for informative purposes only and should not be considered certified or as a guarantee of satisfactory results by reliance thereon. Nothing contained herein is to be construed as a warranty or guarantee, express or implied, regarding any matter with respect to this product. Because Flowserve is continually improving and upgrading its product design, the specifications, dimensions and information contained herein are subject to change without notice. Should any question arise concerning these provisions, the purchaser/user should contact Flowserve Corporation at any one of its worldwide operations or offices.

For more information about Flowserve Corporation, contact [www.flowserve.com](http://www.flowserve.com) or call USA 1-800-225-6989.

**FLOWSERVE CORPORATION**

**FLOW CONTROL DIVISION**

**Vogt Valves**

1511 Jefferson Street  
Sulphur Springs, TX 75482  
Phone: 903-885-3151  
Facsimile: 903-439-3386